



Warhawks Men's Basketball

University of Louisiana at Monroe



ULM (8-13, 5-8 SBC)

WARHAWKS

Vs.

WKU (17-9, 9-4 SBC)

HILLTOPPERS



Game 22

Saturday, Feb. 22, 2014 • 7:00 p.m.
E.A. Diddle Arena (7,326) • Bowling Green, Ky.

Television: ESPN3
(Jeff Younglove & Paul Sanderford)
Radio: - KLIP LA 105.3 FM, Nick White (PXP)
Twitter: @ULM_MBB

ULM Quick Notes

- Freshman Nick Coppola and junior Chinedu Amajoyi are coming off career-games in ULM's last outing against Georgia State on Thursday. Coppola netted 16 points while Amajoyi put in 11. Coppola has played seven 40-minute games this season and tied the school record of five in-a-row set in 1999-2000 by Maurice Bell

- The Warhawks out-rebounded the Panthers 37-32 and held a 10-6 edge in second chance points

- Junior Tylor Ongwae has tallied 13 consecutive double-figure scoring games, reaching that mark in every SBC contest. He's recorded double-digits in 19 of 21 games on the season. Ongwae leads the team with 16.8 points per game on the year and 19.5 ppg in league games (third in the SBC)

- Senior Jayon James leads the team in both rebounds (6.2 rpg) and assists (4.6 apg) and also scores 9.8 ppg on the year. He has led the team in assists in 14 games this season. James has posted at least 10 points, five rebounds and five assists eight times this season. His 5.2 apg in conference games ranks second in the league

- In ULM's last home game, it posted a 65-49 victory over UALR. The 49 points is the fewest ULM has ever let up and the 16-point is the largest ever in 23 meetings between the two schools. The Warhawks dominated in the paint, 30-14. It was ULM's largest win over an SBC opponent since Feb. 22, 2007 when it defeated Denver 87-51

- The ULM defense shut down the Trojans, allowing just 13 points in the first half - the fewest ULM has let up in a half this season. The Warhawks recorded a season-high 12 steals and 12 blocks

- The Warhawks are 4-0 this season when scoring at least 80 points, 7-0 when it has at least four double-figure scorers, 6-1 when scoring at least 20 points off the bench and 6-1 when tied or leading at halftime

- With five regular season games still remaining, ULM has already doubled its season win total and has topped its conference win total by two games from last season. ULM was 4-23 overall and 3-17 in SBC play last year

ULM MEN'S BASKETBALL SCHEDULE

Fri., Nov. 8	at No. 5 Kansas	L, 80-63
Mon., Nov. 18	Samford	W, 86-52
Thu., Nov. 21	at Northwestern St.	W, 84-80 (OT)
Mon., Dec. 9	Thomas	W, 84-61
Sat., Dec. 14	at LSU	L, 61-54
Wed., Dec. 18	at Ole Miss	L, 75-62
Sun., Dec. 22	Louisiana Tech	L, 83-61
Fri., Dec. 27	at No. 3 Ohio State	L, 71-31
Sat., Jan. 4	UL-Lafayette*	W, 103-98 (20T)
Thurs., Jan. 9	at UT Arlington*	L, 83-79 (OT)
Sat., Jan. 11	Texas State*	L, 61-36
Thu., Jan. 16	at Troy*	W, 75-64
Sat., Jan. 18	at South Alabama*	W, 64-58
Thu., Jan. 23	WKU*	L, 69-51
Sat., Jan. 25	Georgia State*	L, 66-58
Thu., Jan. 30	Arkansas State*	W, 72-65
Sat., Feb. 1	at UL-Lafayette*	L, 66-50
Thu., Feb. 6	at Texas State*	L, 65-57
Thu., Feb. 13	UT Arlington*	L, 85-74
Sat., Feb. 15	UALR*	W, 65-49
Thu., Feb. 20	at Georgia State*	L, 75-60
Sat., Feb. 22	at WKU*	7:00 p.m.
Thu., Feb. 27	South Alabama*	7:00 p.m.
Sat., Mar. 1	Troy*	4:00 p.m.
Thu., Mar. 6	at Arkansas State*	7:05 p.m.
Sat., Mar. 8	at UALR*	7:00 p.m.
Thurs., Mar. 13	Sun Belt Championships	TBA

All times Central and subject to change. Bold indicates home contests.; *-Sun Belt game

We are ULM. Please note that there are only two correct versions of our institution's name, the preferred acronym ULM and the full name, the University of Louisiana at Monroe. Any other reference, including Louisiana-Monroe, UL-Monroe, La.-Monroe, LAM, or simply Monroe, are incorrect.

Media Relations Contacts

Robbie Kleinmuntz (Primary)	Tom Ritter (Secondary)
Assistant Director	Graduate Assistant
kleinmuntz@ulm.edu	ritterf@warhawks.ulm.edu
O: 318-342-5462	O: 318-342-5451
C: 847-912-5380	C: 318-953-0734



Warhawks Men's Basketball

University of Louisiana at Monroe



Keith Richard

Head Coach

Fourth Year at ULM
13th Season Overall

Alma Mater: ULM (1982)

THE RICHARD FILE

COACHING HONORS

- 1999 Sun Belt Coach of the Year
- Has been part of the coaching staff for seven NCAA Tournament and three NIT teams

COACHING CAREER

Season	School	Position	Record
1984-85	ULM	Graduate Assistant	17-12
1985-86	ULM	Graduate Assistant	20-10/NCAA
1986-87	Marshall	Assistant Coach	25-6/NCAA
1987-88	Marshall	Assistant Coach	24-8/NIT
1988-89	Marshall	Assistant Coach	15-15
1989-90	ULM	Assistant Coach	22-8/NCAA
1990-91	ULM	Assistant Coach	25-8/NCAA
1991-92	ULM	Assistant Coach	19-10/NCAA
1992-93	ULM	Assistant Coach	26-5/NCAA
1993-94	ULM	Assistant Coach	19-9
1994-95	La. Tech	Assistant Coach	14-13
1995-96	La. Tech	Associate Head Coach	11-17
1996-97	La. Tech	Associate Head Coach	15-14
1997-98	La. Tech	Associate Head Coach	12-15
1998-99	La. Tech	Head Coach	19-9
1999-00	La. Tech	Head Coach	21-8
2000-01	La. Tech	Head Coach	17-12
2001-02	La. Tech	Head Coach	22-10/NIT
2002-03	La. Tech	Head Coach	12-15
2003-04	La. Tech	Head Coach	15-15
2004-05	La. Tech	Head Coach	14-15
2005-06	La. Tech	Head Coach	20-13/NIT
2006-07	La. Tech	Head Coach	10-20
2008-09	LSU	Assistant Coach	27-8/NCAA
2009-10	LSU	Assistant Coach	11-20
2010-11	ULM	Head Coach	7-24
2011-12	ULM	Head Coach	3-26
2012-13	ULM	Head Coach	4-23
2013-14	ULM	Head Coach	8-13

PLAYING CAREER

- Played for ULM from 1978-82; Coached by Lenny Fant, Benny Hollis & Mike Vining
- 1979 Atlantic Sun Tournament Champions, NIT
- 1980 Atlantic Sun Regular Season Champions
- 1982 Atlantic Sun Tournament Champions, NCAA
- Two-time team captain ('81 & '82)
- Led team in assists twice

EDUCATION

- Bachelor's degree in general business, ULM (1982)
- Master's degree in guidance counseling, ULM (1986)

ULM Quick Notes Continued...

- In a 72-65 win over Arkansas State on Jan. 30, Amajoyi became the first ULM student-athlete this season to make 10 free throws in a single game. He also registered 29 minutes and five rebounds which matched career-highs
- The Warhawks swept a road weekend at Troy and South Alabama, defeating the Trojans 75-64 and the Jaguars 64-58. The seven-point halftime deficit against South Alabama was the largest ULM has overcome this season in a victory. It was ULM's first two-game road winning streak since 2002-03
- Against Troy, the Warhawks shot over 80 percent from the free throw line for the first time this season (14-for-17, .824)
- The Warhawks opened league play with back-to-back overtime games for the first time in school history. ULM is 2-1 in overtime this season, and ULM head coach Keith Richard is 17-8 in his career
- In the first meeting between the Warhawks and the Ragin' Cajuns this season, ULM came away with a 103-98 double overtime victory in the SBC season opener on Jan. 4. Junior Tylor Ongwae led the Warhawks with 27 points and 11 rebounds. ULM had a season-high five double-figure scorings in the contest
- Senior Jayon James also notched a double-double against the Cajuns with 16 points and 12 rebounds. ULM had two student-athletes record a double-double in one game for the first time since Dec. 22, 2009
- ULM's 11 blocks against the Cajuns were the most by ULM since Dec. 2, 2006 when it had 10 against William Carey. ULM also held a 54-44 edge on the boards
- The Warhawks played the eighth toughest non-conference schedule in the country, according to cbssports.com. ULM's opponents went a combined 71-30 in non-conference play as the Warhawks took on a pair of top-5 opponents
- ULM went 36 days inbetween its first two losses on the season. It was its longest stretch without a loss since 1993-94 when they went from Jan. 18 - Feb. 28 between defeats
- After defeating Thomas (Ga.) on Dec. 9, the Warhawks won three consecutive games for the first time since 2007-08. They got off to a 3-1 start on the season for the first time since 2004-05
- The Warhawks trailed Northwestern State by 18 in the second half before mounting their biggest comeback of the season on Nov. 21
- In ULM's home opener, it thumped Samford 86-52 on Nov. 18 and was up by 41 at one point in the second half. The 34-point win was the largest margin of victory for ULM since a 97-43 win over Union College (Ky.) on Jan. 3, 2009. It was ULM's most lopsided score over a Division I program since Feb. 3, 2000 when it defeated Lamar 95-58
- Junior Marvin Williams posted a game-high 19 points against No. 5 Kansas in the season opener, outscoring Andrew Wiggins who was named Preseason National Player of the Year by cbssports.com. Williams went 8-for-13 from the field and grabbed a team-high six rebounds in 24 minutes. Wiggins scored 16.
- ULM earned the 2012-13 SBC team academic award and was one of 21 NCAA Division I men's basketball programs to earn Team Academic Excellence Awards from the National Association of Basketball Coaches
- The Warhawks carry a full scholarship roster for the first time under head coach Keith Richard after inheriting APR penalties. Richard is in his fourth season with the program
- ULM is without senior Amos Olatayo for the rest of the season after an ACL injury against WKU on Jan. 23. Olatayo was second on the team in scoring (13.2 ppg) and rebounding (5.3 rpg). He had 11 double-figure scoring games including three 20-plus games and one 30-point performance



Warhawks Men's Basketball

University of Louisiana at Monroe



Numerical Roster

No.	Player	Pos.	Ht.	Wt.	Cl.	Hometown (Previous School)
0	Marvin Williams	F/C	6-8	245	JR	Memphis, Tenn. (NW Florida State College)
1	Jayon James	F	6-6	225	SR	Paterson, N.J. (Lamar State-Port Arthur)
2	DeMondre Harvey	F	6-7	210	SO	Minden, La. (Pearl River CC)
3	Marcelis Hansberry	G	6-0	185	SR	Jackson, Miss. (Provine HS)
4	RJ McCray	G	6-2	190	SR	Arlington, Texas (Grace Prep Academy)
10	Amos Olatayo	G	6-4	200	SR	Houston, Texas (Navarro College)
11	Nick Coppola	G	5-11	195	FR	Richmond, Va. (Benedictine Prep)
12	Tylor Ongwae	F	6-7	205	JR	Eldoret, Kenya (Ranger College)
13	Chinedu Amajoyi	G	6-3	195	JR	Rancho Cucamonga, Calif. (Kilgore College)
15	Kyle Koszuta	G	6-2	190	SO	Niceville, Fla. (Niceville HS)
20	Evan Sims	F/C	6-8	235	JR	Houston, Texas (Lamar State-Port Arthur)
22	Lance Richard	G	5-10	170	FR	Monroe, La. (Sterlington HS)
23	Millaun Brown	F/C	6-7	230	SR	Gunnison, Miss. (East Mississippi CC)
33	Daniel Grieves	G/F	6-6	210	SO	Bay St. Louis, Miss. (Pearl River CC)
34	Leon Carswell II	F	6-3	210	JR	Bossier City, La. (Airline HS)
35	Colten Ponder	F	6-5	215	SO	Shreveport, La. (Calvary Baptist HS)

COACHING STAFF

Head Coach: Keith Richard (ULM '82)

Assistant Coach: Ryan Cross (Buffalo '95)

Assistant Coach: Lonnie Cooper (Louisiana Tech '99)

Assistant Coach J.A. Anglin (LSU Shreveport '10)

Coordinator of Basketball Operations: Wyatt Hodges

PRONUNCIATION

Keith/Lance RICHARD Ree-CHARD

MILLAUN Brown Mih-LAHN

JAYON James Jay-AHN

AMOS OLATAYO AIM-uhs Ole-ah-tay-O

CHINEDU AMAJOYI Chin-ih-due Om-uh-joy

TYLOR ONGWAE

Kyle KOSZUTA

Nick COPPOLA

Tie-ler Ong-why

Kus-zoo-tuh

Cuh-pole-luh

BY CLASS

Seniors (5).....Millaun Brown
Marcelis Hansberry
Jayon James
R.J. McCray
Amos Olatayo
 Juniors (5).....Chinedu Amajoyi
Leon Carswell
Tylor Ongwae
Evan Sims
Marvin Williams
 Sophomores (4)Daniel Grieves
DeMondre Harvey
Kyle Koszuta
Colten Ponder
 Freshmen (2).....Nick Coppola
Lance Richard

BY POSITION

Guards.....Chinedu Amajoyi
Nick Coppola
Marcelis Hansberry
Kyle Koszuta
RJ McCray
Amos Olatayo
Lance Richard
 Guard/FowardDaniel Grieves
 ForwardsLeon Carswell
DeMondre Harvey
Jayon James
Tylor Ongwae
Colten Ponder
 Forward/CenterMillaun Brown
Evan Sims
Marvin Williams

BY STATE/COUNTRY

California.....Chinedu Amajoyi
 Florida.....Kyle Koszuta
 KenyaTylor Ongwae
 Louisiana.....Leon Carswell
DeMondre Harvey
Colten Ponder
Lance Richard
 Mississippi.....Millaun Brown
Daniel Grieves
Marcelis Hansberry
 New JerseyJayon James
 TennesseeMarvin Williams
 TexasR.J. McCray
Amos Olatayo
Evan Sims
 VirginiaNick Coppola

WE ARE ULM

12 REGULAR SEASON CHAMPIONSHIPS

1961-62 - Gulf States Conference
 1964-65 - Gulf States Conference
 1978-79 - Atlantic Sun Conference
 1979-80 - Atlantic Sun Conference
 1985-86 - Southland Conference
 1989-90 - Southland Conference
 1990-91 - Southland Conference
 1992-93 - Southland Conference
 1993-94 - Southland Conference
 1995-96 - Southland Conference
 1996-97 - Southland Conference
 2006-07 - Sun Belt Conference West Division

NINE POST-SEASON APPEARANCES

1978-79 - NIT
 1981-82 - NCAA Tournament
 1985-86 - NCAA Tournament
 1987-88 - NIT
 1989-90 - NCAA Tournament
 1990-91 - NCAA Tournament
 1991-92 - NCAA Tournament
 1992-93 - NCAA Tournament
 1995-96 - NCAA Tournament

EIGHT TOURNAMENT CHAMPIONSHIPS

1978-79 - Atlantic Sun Conference
 1981-82 - Atlantic Sun Conference
 1985-86 - Southland Conference
 1989-90 - Southland Conference
 1990-91 - Southland Conference
 1991-92 - Southland Conference
 1992-93 - Southland Conference
 1995-96 - Southland Conference



Warhawks Men's Basketball

University of Louisiana at Monroe



ULM Quick Facts

Location _____ Monroe, La.
Enrollment _____ 8,858
Founded _____ 1931
Nickname/Mascot _____ Warhawks/Ace
Colors _____ Maroon & Gold
President _____ Dr. Nick Bruno
Director of Athletics _____ Brian Wickstrom
Conference _____ Sun Belt
Affiliation _____ NCAA Division I
All-Time Record _____ 907-807 (62nd season)
Winning Seasons _____ 38 (20+ wins 10 times)
Home Venue _____ Fant-Ewing Coliseum (7000)
Playing Surface _____ Maple
Opened _____ 1971
Press Row Phone _____ 318-342-6920

Head Coach _____ Keith Richard
Record at ULM _____ 22-86 (fourth year)
Career Record _____ 172-203 (13th year)
Assistant Coach _____ Ryan Cross
Assistant Coach _____ Lonnie Cooper
Assistant Coach _____ J.A. Anglin
Coordinator of MBB Ops. _____ Wyatt Hodges
Athletic Trainer _____ Jeremy Teblum
Strength Coach _____ Brian Seitz

Website _____ www.ulmwarhawks.com
Facebook _____ www.facebook.com/warhawks
Twitter _____ @ULM_MBB

Sun Belt Conference Preseason Coaches Poll

1. WKU - 91 (5)
2. South Alabama - 78 (2)
3. Arkansas State - 74
- T-4. Georgia State - 73 (2)
- T-4. UL-Lafayette - 73 (1)
6. UALR - 48
7. UT Arlington - 36
8. Texas State - 34
9. Troy - 26
10. ULM - 17

Jayon James

- Preseason SBC
All-Conference
Third-Team

- CSM Preseason
All-SBC
Third-Team

Amos Olatayo

- CSM Preseason
All-SBC
Third-Team

All-Time Series History vs. WKU

WKU leads 11-1
At ULM: WKU leads 5-1
At WKU: WKU leads 4-0
On Neutral Courts: WKU leads 2-0

Scouting WKU

WKU (17-9, 9-4 SBC) sits in second place in the Sun Belt Conference standings. It dropped its last game, 69-62 to South Alabama last Saturday at home. Junior guard T.J. Price scored 15 points to move him into 29th place on the all-time WKU career scoring leaderboard (1,176 points).

Price leads the team with 16.2 points per game on the season, while George Fant averages 13.2 points and 6.9 rebounds per contest. Trency Jackson also averages in double-figures with 10.0 points per game. Fant has 10 double-doubles this season and is the only Hilltopper to start in all 26 of their games.

In the first meeting between the two programs on Jan. 23, WKU came out on front 69-51. Junior Tylor Ongwae recorded team-highs of 11 points and six rebounds. Senior Amos Olatayo tallied 10 points, but tore his ACL in the second half. WKU shot 51.0 percent in the game (8-for-12 3FG) and held ULM to 38.6 percent (3-for-16 3FG).

The Hilltoppers were picked as the SBC preseason favorite after winning the conference tournament last year and advanced to the NCAA Tournament as a No. 16 seed. It was the second consecutive year they won the SBC Tournament.

Ray Harper enters his third season as Hilltopper head coach in 2013-14. Under Harper, the Hilltoppers are 8-0 in Sun Belt Conference Tournament action, resulting in two championships and automatic berths to the NCAA Tournament, and WKU is 14-3 in games played on or after February 21.

Harper took over midway in 2011-12 and WKU went 7-1 after he was named full-time head coach after starting the season 5-11. The Hilltoppers then defeated Mississippi Valley State in the first round of the NCAA Tournament after erasing a 16-point deficit with 4:51 left to play.

Harper's stellar head coaching resume includes four national championships in 12 seasons at Kentucky Wesleyan College and Oklahoma City University, five national runner-up finishes, eight conference titles, five national coach-of-the-year honors and a remarkable .844 winning percentage after winning 342 of 405 games at his two stops before WKU.

2013-14 NON-CONFERENCE STRENGTH OF SCHEDULE RANKINGS

according to cbssports.com (1/1/14)

RK	School	SOS	Opp. Winning %
1.	New Orleans	.6951	.7669
2.	Kansas	.6840	.7500
3.	Long Beach State	.6443	.7166
4.	BYU	.6323	.6949
5.	Massachusetts	.6262	.6574
6.	Eastern Michigan	.6192	.6448
7.	Colorado	.6162	.6597
8.	ULM	.6152	.6744
9.	Alabama	.6142	.6468
10.	Oakland	.6130	.6585

RICHARD VS. 2013-14 OPPONENTS

Arkansas State6-8
Georgia State0-2
Kansas0-1
Louisiana Tech0-4
UL-Lafayette7-12
LSU0-2
Northwestern State2-1
Ohio State0-1
Ole Miss0-2
Samford1-0
South Alabama5-5
Texas-Arlington0-2
Texas State0-2
Thomas1-0
Troy1-4
UALR8-6
WKU5-8



Warhawks Men's Basketball

University of Louisiana at Monroe



In ULM's Last Outing...

Coppola, Amajoyi Register Career-Highs in Defeat at GSU

ATLANTA – Freshman Nick Coppola and junior Chinedu Amajoyi scored career-highs for the ULM men's basketball program, but first-place Georgia State prevailed 75-60 on Thursday at the Sports Arena.

Coppola posted 16 points for ULM (8-13, 5-8 SBC) including four three-pointers. He also tallied five points and five rebounds. Amajoyi netted 11 points and went three-for-four from beyond-the-arc. Junior Tylor Ongwae scored 14 points and grabbed a team-high seven rebounds.

GSU (19-7, 12-1 SBC) was led by Manny Atkins who scored 21 and Devonta White with 20 points. R.J. Hunter put in 12 points and Markus Crider had 10 off the bench.

Hot shooting early gave the Panthers an 8-2 edge in the first half. GSU was up by 10 when sophomore Daniel Grieves drained a three-pointer and Ongwae capitalized on a basket in transition to make it a 24-19 game at the 8:09 mark.

ULM further cut into the GSU lead at 29-26 after a three-pointer by Coppola with 4:04 to go. The Panthers closed the half on a 6-0 run to take a 37-28 lead into the intermission.

GSU began the second half on a 6-0 run to go up 43-28 as ULM called timeout with 17:48 left. The Panthers led 51-33 when the Warhawks went on a 5-0 run, capped by a converted and-one by junior Marvin Williams to make it 51-38 with 12:28 remaining.

The Panthers led 65-45 when ULM made a late push and made a 9-0 run to make it a 65-54 game with 3:51 to go. A three-pointer by Amajoyi further cut it to 67-57 at the 3:32 mark.

Official Basketball Box Score -- Game Totals -- Final Statistics ULM vs Georgia State 02/20/14 7:00 p.m. at GSU Sports Arena/Atlanta, Ga.

ULM 60 • 8-13, 5-8 SBC

#	Player		Total		3-Ptr	Rebounds					PF	TP	A	TO	Blk	Stl	Min
			FG-FGA	FT-FTA	FG-FGA	FT-FTA	Off	Def	Tot								
01	James,Jayon	f	0-3	0-0	1-2	0	6	6	1	1	2	4	0	0	0	27	
12	Ongwae,Tylor	f	5-14	1-4	3-4	3	4	7	1	14	1	1	0	1	1	32	
00	Williams,Marvin	c	3-7	0-0	3-8	2	3	5	4	9	0	1	0	1	0	28	
11	Coppola,Nick	g	5-11	4-7	2-2	0	5	5	2	16	5	2	0	0	0	34	
13	Amajoyi,Chinedu	g	3-7	3-4	2-3	1	4	5	2	11	0	1	0	0	0	19	
02	Harvey,DeMondre		3-4	0-0	0-0	3	3	6	2	6	2	0	0	1	0	23	
04	McCray,RJ		0-3	0-3	0-0	0	0	0	0	0	1	3	0	0	0	13	
15	Kozuta,Kyle		0-1	0-1	0-0	0	0	0	0	0	0	0	0	0	0	6	
23	Brown,Millaun		0-0	0-0	0-0	0	0	0	0	0	0	0	0	0	0	1	
33	Grieves,Daniel		1-3	1-2	0-0	1	1	2	3	3	0	1	0	0	0	17	
Team						0	1	1				1					
Totals			20-53	9-21	11-19	10	27	37	15	60	11	14	0	3	0	200	
FG % 1st Half: 11-25 44.0%			2nd half: 9-28 32.1%			Game: 20-53 37.7%						Deadball					
3FG % 1st Half: 4-9 44.4%			2nd half: 5-12 41.7%			Game: 9-21 42.9%						Rebounds					
FT % 1st Half: 2-2 100.0			2nd half: 9-17 52.9%			Game: 11-19 57.9%						4					

Georgia State 75 • 19-7, 12-1 SBC

#	Player		Total		3-Ptr		Rebounds			PF	TP	A	TO	Blk	Stl	Min
			FG-FGA	FG-FGA	FT-FTA	Off	Def	Tot								
23	Atkins, Manny	f	6-10	4-8	5-6	2	7	9	1	21	2	2	0	2	36	
45	Burguillos, Denny	f	0-2	0-0	0-0	1	1	2	0	0	0	0	0	1	9	
12	White, Devonta	g	6-11	2-4	6-6	0	4	4	2	20	5	2	0	2	38	
22	Hunter, R.J.	g	4-14	1-8	3-4	0	5	5	2	12	3	1	1	1	31	
55	Harrow, Ryan	g	3-9	0-4	0-0	0	1	1	1	6	5	0	0	0	31	
01	Smith, LaRon		0-0	0-0	0-0	0	0	0	0	0	0	0	1	0	2	
02	Green, Ryann		0-1	0-1	0-0	0	0	0	3	0	0	0	0	1	7	
10	Shaw, Kevin		0-0	0-0	0-0	0	0	0	0	0	0	0	0	0	1	
11	Hinton, Jaylen		2-3	0-0	0-1	0	1	1	0	4	1	0	0	0	4	
25	Richardson, Rashaad		0-1	0-1	0-0	0	0	0	0	0	0	0	0	0	3	
31	Shipes, T.J.		1-1	0-0	0-0	1	1	2	3	2	0	1	0	0	14	
33	Crider, Markus		5-5	0-0	0-1	1	6	7	1	10	0	0	3	2	24	
Team						0	1	1								
Totals			27-57	7-26	14-18	5	27	32	13	75	16	6	5	9	200	
FG % 1st Half: 13-29 44.8%			2nd half: 14-28 50.0%			Game: 27-57 47.4%			Deadball							
3FG % 1st Half: 5-17 29.4%			2nd half: 2-9 22.2%			Game: 7-26 26.9%			Rebounds							
FT % 1st Half: 6-7 85.7%			2nd half: 8-11 72.7%			Game: 14-18 77.8%			2							

Officials: Mark Schnur, Anthony Jordan, Byron Jarrett
Technical fouls: ULM-None. Georgia State-None.
Attendance: 1809

Score by periods	1st	2nd	Total
ULM	28	32	60
Georgia State	37	38	75

Points	In	Off	2nd	Fast	Bench
ULM	22	9	10	5	9
GSU	36	18	6	11	16

HOME COURT ADVANTAGE

389-168 All-Time in Fant-Ewing Coliseum

ULM RECORDS IN FANT-EWING

Year	Games	Record	Pct.	Avg. Attend.
1971-72	10	6-4	.600	4,190
1972-73	11	8-3	.727	3,232
1973-74	11	8-3	.727	3,250
1974-75	12	11-1	.917	3,454
1975-76	13	10-3	.769	5,451
1976-77	13	9-4	.692	5,073
1977-78	13	10-3	.769	4,459
1978-79	16	15-1	.937	5,215
1979-80	14	10-4	.714	3,678
1980-81	16	8-8	.500	3,067
1981-82	16	13-3	.812	3,808
1982-83	14	12-2	.857	2,946
1983-84	16	11-5	.688	2,098
1984-85	13	9-4	.692	2,380
1985-86	15	14-1	.933	2,114
1986-87	13	8-5	.615	2,582
1987-88	12	10-2	.833	2,582
1988-89	12	8-4	.667	2,861
1989-90	14	13-1	.928	2,949
1990-91	14	14-0	1.000	3,327
1991-92	12	9-3	.750	2,710
1992-93	14	14-0	1.000	3,892
1993-94	14	10-4	.714	3,351
1994-95	12	9-3	.750	3,619
1995-96	11	8-3	.727	2,182
1996-97	12	9-3	.750	1,822
1997-98	11	7-4	.636	1,301
1998-99	11	7-4	.636	1,913
1999-00	14	11-3	.786	2,003
2000-01	13	9-4	.692	935
2001-02	12	12-0	1.000	3,437
2002-03	12	7-5	.583	1,412
2003-04	13	9-4	.692	1,624
2004-05	13	6-7	.462	1,296
2005-06	13	8-5	.615	793
2006-07	14	14-0	1.000	1,952
2007-08	12	5-7	.417	1,338
2008-09	14	8-6	.571	907
2009-10	14	8-6	.571	1,398
2010-11	13	4-9	.308	1,400
2011-12	13	0-13	.000	1,438
2012-13	12	3-9	.250	1,255
2013-14	10	5-5	.500	1,581
TOTALS	557	389-168	.698	



Warhawks Men's Basketball

University of Louisiana at Monroe



Number of times in 2013-14 a ULM student-athlete has led the team in...

Points		Free Throws Made		Blocks	
Taylor Ongwae	13	Taylor Ongwae	12	Taylor Ongwae	6
Amos Olatayo	3	Jayon James	5	Marvin Williams	5
Jayon James	2	Marvin Williams	2	Jayon James	5
Marvin Williams	2	Amos Olatayo	2	Amos Olatayo	4
Nick Coppola	1	Chinedu Amajoyi	1	DeMondre Harvey	4
		Nick Coppola	1	Millaun Brown	1
		Kyle Koszuta	1	Evan Sims	1
		R.J. McCray	1	Chinedu Amajoyi	1
Rebounds		Free Throw Attempts		Steals	
Taylor Ongwae	8	Taylor Ongwae	10	Taylor Ongwae	11
Jayon James	6	Jayon James	6	Jayon James	9
Amos Olatayo	3	Amos Olatayo	3	Nick Coppola	5
Marvin Williams	3	Nick Coppola	2	Amos Olatayo	3
DeMondre Harvey	3	Chinedu Amajoyi	1	R.J. McCray	3
Nick Coppola	1	R.J. McCray	1	Kyle Koszuta	3
		Marvin Williams	1	DeMondre Harvey	3
Assists		3FG Made		Minutes	
Jayon James	14	Daniel Grieves	9	Nick Coppola	8
Nick Coppola	9	Amos Olatayo	7	Taylor Ongwae	6
Kyle Koszuta	2	Taylor Ongwae	6	Jayon James	6
R.J. McCray	2	Nick Coppola	4	Amos Olatayo	2
Daniel Grieves	1	R.J. McCray	2	Daniel Grieves	1
Taylor Ongwae	1	Chinedu Amajoyi	1	Kyle Koszuta	1
				R.J. McCray	1
Field Goals Made		3FG Attempts		<i>Note: If multiple student-athletes tie in a category in a single game, they all receive credit for leading the team</i>	
Taylor Ongwae	14	Daniel Grieves	9		
Amos Olatayo	4	Amos Olatayo	7		
Marvin Williams	3	Nick Coppola	3		
Jayon James	2	Kyle Koszuta	2		
Nick Coppola	1	Chinedu Amajoyi	2		
		Taylor Ongwae	1		
Field Goal Attempts					
Taylor Ongwae	15				
Amos Olatayo	4				
Jayon James	1				
Daniel Grieves	1				
Marvin Williams	1				

Double-Doubles

2013-14 Season

Taylor Ongwae (3)

27 pt, 11 reb vs. ULL (1/4/14)
27 pt, 10 reb vs. GSU (1/25/14)
16 pt, 11 reb at ULL (2/1/14)

Jayon James (2)

16 pt, 12 reb vs. ULL (1/4/14)
12 pt, 11 reb vs. UALR (2/15/14)

Marvin Williams (1)

13 pt, 10 reb at NSU (11/21/13)

Career

Jayon James (7)

10 pt, 12 reb vs SLU (12/10/12)
26 pt, 10 reb vs FAU (12/12/12)
11 pt, 12 reb vs SU (12/13/12)

19 pt, 10 reb at NT (1/5/13)

11 pt, 15 ast at FIU (2/2/13)

16 pt, 12 reb vs. ULL (1/4/14)

12 pt, 11 reb vs. UALR (2/15/14)

Individual Career Totals for Returning Student-Athletes

Only includes statistics at ULM

Points

A. Olatayo	549
J. James	459
R.J. McCray	404
M. Hansberry	390
M. Brown	187
K. Koszuta	141

Steals

J. James	65
R.J. McCray	59
M. Hansberry	46
A. Olatayo	46
K. Koszuta	32
M. Brown	27

Field Goals M-A

A. Olatayo	238-517
J. James	176-403
M. Hansberry	142-353
R.J. McCray	145-348
M. Brown	82-148
K. Koszuta	46-130

Free Throws M-A

J. James	103-200
A. Olatayo	99-170
R.J. McCray	80-125
M. Hansberry	80-124
M. Brown	21-55
K. Koszuta	15-24

Rebounds

J. James	296
A. Olatayo	207
M. Brown	175
R.J. McCray	149
M. Hansberry	137
K. Koszuta	33

Three-Pointers M-A

A. Olatayo	44-148
K. Koszuta	34-90
R.J. McCray	34-104
M. Hansberry	26-107
J. James	4-36

Assists

J. James	233
R.J. McCray	124
M. Hansberry	110
K. Koszuta	55
A. Olatayo	31
M. Brown	14

Games/Starts

R.J. McCray	94/35
M. Hansberry	71/28
J. James	48/46
K. Koszuta	45/2
M. Brown	40/25
A. Olatayo	37/30

Blocks

J. James	25
A. Olatayo	17
R.J. McCray	15
M. Brown	10
M. Hansberry	2

Minutes

R.J. McCray	1858
J. James	1611
M. Hansberry	1387
A. Olatayo	1101
M. Brown	881
K. Koszuta	601

Double-Figures and Categorical Highs

Double-Figures	Season 10+ Points	Season 10+ Rebs	Season 10+ Asts
Taylor Ongwae	19 times (20+ 8 times)	3 times	
Jayon James	11 times	3 times	
Amos Olatayo	11 times (20+ 3 times)		
Nick Coppola	6 times		
Marvin Williams	5 times	1 time	
Daniel Grieves	3 times		
Chinedu Amajoyi	2 times		
R.J. McCray	2 times		
DeMondre Harvey	1 time		

Double-Figures	Career 10+ Points	Career 10+ Rebs	Career 10+ Asts
Amos Olatayo	28 times (20+ 12 times)	1 time	
Jayon James	24 times (20+ 1 time)	9 times	2 times
Taylor Ongwae	19 times (20+ 8 times)	3 times	
Marcelis Hansberry	15 times (20+ 1 time)		
R.J. McCray	13 times		
Nick Coppola	6 times		
Millaun Brown	5 times (20+ 1 time)	1 time	
Marvin Williams	5 times	1 time	
Kyle Koszuta	3 times		
Daniel Grieves	3 times		
Chinedu Amajoyi	2 times		
DeMondre Harvey	1 time		

Single-Game Categorical Highs 2013-14

Points	Amos Olatayo - 30, at NSU
Field Goals Made	Amos Olatayo/Taylor Ongwae - 11 (Olatayo at NSU) (Ongwae vs ULL)
3FG Made	Amos Olatayo/Taylor Ongwae/Nick Coppola - 4
Free Throws Made	Chinedu Amajoyi - 10 (vs. Arkansas State)
Rebounds	Jayon James - 12 (vs. UL-Lafayette)
Assists	Jayon James - 9 (at UTA)
Steals	Taylor Ongwae - 5 (vs. UALR)
Blocks	Jayon James/Amos Olatayo - 5 (James vs. UALR) (Olatayo vs. ULL)



Warhawks Men's Basketball

University of Louisiana at Monroe



The Last Time ULM...

Scored 100 or more points
Scored 90 or more points
Scored 80 or more points
Scored fewer than 40 points
Held an opponent to under 50 points
Held an opponent to under 40 points
Won by 30 or more points
Won by 40 or more points
Won by 50 or more points
Won by 60 or more points
Had four double-digit scorers
Had five double-digit scorers
Had no double-digit scorers
Had 20 or more assists
Had fewer than 10 assists
Had 10 or more blocks
Had 10 or more steals
Had 20 or more turnovers
Had fewer than 10 turnovers
Made 30 or more field goals
Made 40 or more field goals
Made 50 or more field goals
Shot over 50 pct from field
Shot over 60 pct from field
Shot less than 20 pct from field
Made 10 or more 3-pointers
Made 15 or more 3-pointers
Shot over 50 pct from 3FG
Shot over 60 pct from 3FG
Shot less than 20 pct from 3FG
Made 20 or more free throws
Made 30 or more free throws
Shot over 80 pct free throws
Shot over 90 pct free throws
Won on a buzzer beater
Lost on a buzzer beater
Won on the last possession
Lost on the last possession
Won in overtime
Won in double overtime
Won in triple overtime
Had two double-doubles in one game
Had two 20+ scorers in one game

105, vs. UL-Lafayette (1/4/2014)
105, vs. UL-Lafayette (1/4/2014)
105, vs. UL-Lafayette (1/4/2014)
36, vs. Texas State (1/11/2014)
49, vs. UALR (2/15/2014)
37, vs. LeTourneau (11/25/1991)
34, vs. Samford (11/18/2013)
54, vs. Union College (1/3/2009)
54, vs. Union College (1/3/2009)
63, vs. LeTourneau (11/25/1991)
vs. Arkansas State (1/30/2014)
vs. UL-Lafayette (1/4/2014)
at No. 3 Ohio State (12/27/2013)
20, at FIU (2/2/2013)
7, vs. Texas State (1/11/2014)
12, vs. UALR (2/15/2014)
12, vs. UALR (2/15/2014)
20, vs. Thomas (12/9/2013)
9, at UL-Lafayette (2/1/2014)
33, at UT Arlington (1/9/2014)
41, vs. Texas College (12/22/2003)
51, vs. Georgia Southern (2/8/1979)
.510 (23-45), at Texas State (2/6/2014)
.620 (31-50), at Nicholls State (11/28/2011)
.185 (10-54) at No. 3 Ohio State (12/27/2013)
10, at UT Arlington (1/9/2014)
15, vs. Middle Tennessee (1/24/2008)
.643 (9-14), at Troy (1/16/2014)
.643 (9-14), at Troy (1/16/2014)
.190 (4-21), vs. Georgia State (1/25/2014)
24, vs. UL-Lafayette (1/4/2014)
30, vs. Troy (12/31/2009)
.824 (14-17), at Troy (1/16/2014)
1.000 (5-5), at Texas A&M (12/10/2011)
W, 60-58, vs. SFA (Malcolm Thomas Jumper) (11/25/2008)
L, 76-73, at La. Tech (Kyle Gibson 3FG) (12/2/2009)
W, 65-64, vs. FAU (Trent Mackey 3FG, 8 secs) (12/29/2012)
L, 65-64, vs. SFA (Zac Downing 3FG, 4 secs) (11/23/2010)
W, 103-98 (2OT), vs. UL-Lafayette (1/4/2014)
W, 103-98 (2OT), vs. UL-Lafayette (1/4/2014)
W, 107-106 (3OT), at La. Tech (1/5/1970)
Tylor Ongwae & Jayon James, vs. UL-Lafayette (1/4/2014)
Tylor Ongwae (25) & Amos Olatayo (20), at UT Arlington (1/9/2014)

A ULM Player...

Had a double-double (pts-rbs)
Had a double-double (pts-asts)
Had a triple-double
Had 20 points or more
Had 30 points or more
Had 40 points or more
Had 50 points or more
Made 10 or more field goals
Made 15 or more field goals
Made five or more 3FG
Made 10 or more FT
Had 10 or more rebounds
Had 15 or more rebounds
Had 20 or more rebounds
Had 25 or more rebounds
Had 30 or more rebounds
Had 10 or more assists
Had 15 or more assists
Had five or more steals
Had 10 or more steals
Had five or more blocks
Had 10 or more blocks
Played 40 minutes or more

Jayon James (12 pts and 11 rebs), vs. UALR (2/15/2014)
Jayon James (11 pts and 15 asts), at FIU (2/2/2013)
Wojciech Mydra (11 pts, 10 rebs, 10 blks) vs. SHSU (1/24/2002)
Tylor Ongwae (25), vs. UALR (2/15/2014)
Amos Olatayo (30), at Northwestern State (11/21/2013)
Henry Steele (40), vs. Louisiana College (1/23/1971)
Glynn Saulters (51), vs. Nicholls State (1/1/1968)
Tylor Ongwae (10), vs. Georgia State (1/25/2014)
Mike Smith (15), vs. Houston (12/15/1999)
Trent Mackey (5), vs. North Texas (2/14/2013)
Chinedu Amajoyi (10-12), vs. Arkansas State (1/30/2014)
Jayon James (11), vs. UALR (2/15/2014)
Lance Brasher (17), vs. Middle Tennessee (1/24/2008)
DeAndre Alexander (20), vs. Lamar (3/2/2005)
Calvin Natt (25), vs. Miss. State (12/5/1978)
Calvin Natt (31) vs. Georgia Southern (12/29/1976)
Jayon James (10), vs. Arkansas State (2/16/2013)
Larry Saults (19), vs. Mississippi College (1/7/1970)
Tylor Ongwae (5), vs. UALR (2/15/2014)
Arthur Hayes (10), vs. McNeese State (1983)
Jayon James (5), vs. UALR (2/15/2014)
Wojciech Myrda (13), vs. UTSA (3/2/2002)
Nick Coppola (40), vs. UT Arlington (2/13/14)

MISCELLANEOUS STATS 2013-14

Largest halftime lead

24, vs. Thomas, 46-22

Largest halftime deficit

21, at No. 3 OSU, 41-20

Largest halftime lead surrendered in a loss

None (have held four halftime leads)

Largest halftime deficit overcome in a win

7, at South Alabama, 34-27 (won 64-58)

Largest lead any time

41, vs. Samford, 84-43, 3:01 left 2H

Largest deficit any time

40, at No. 3 OSU, 71-31, 58 secs left 2H

Largest lead surrendered in a loss

8, at UL-Lafayette (2/1/2014)

Largest deficit overcome in a win

18, at Northwestern State (11/21/13)

Most points scored in a half

46, vs. Thomas, first half

Fewest points scored in a half

9, vs. Texas State, second half

Most points allowed in a half

48, vs. LA Tech, first half

Fewest points allowed in a half

13, vs. UALR, first half

Largest Rebounding Advantage

+18, vs. Thomas, 41-23

Largest Rebounding Disadvantage

-12, at South Alabama, 46-34

Highest Plus Turnover Differential

+7, vs. Arkansas State, 14-7

Highest Minus Turnover Differential

-14, at NSU, 29-15

Most 3FG Made In a Game

10, at UT Arlington (10-23)

Most 3FG Allowed in a Game

13, at UT Arlington (13-29)



Warhawks Men's Basketball

University of Louisiana at Monroe



2013-14 ULM MEN'S BASKETBALL

Overall Stats

ULM Combined Team Statistics (as of Feb 20, 2014)

All games

RECORD:	OVERALL	HOME	AWAY	NEUTRAL
ALL GAMES	8-13	5-5	3-8	0-0
CONFERENCE	5-8	3-4	2-4	0-0
NON-CONFERENCE	3-5	2-1	1-4	0-0

#	Player	gp-gs	min	avg	Total		3-Point		F-Throw		Rebounds				pf	dq	a	to	blk	stl	pts	avg
					fg-fga	fg%	3fg-fga	3fg%	ft-fa	ft%	off	def	tot	avg								
12	Ongwae, Tylor	21-21	662	31.5	125-287	.436	20-75	.267	83-107	.776	38	84	122	5.8	54	2	29	36	16	28	353	16.8
10	Olatayo, Amos	14-11	392	28.0	68-150	.453	20-63	.317	29-51	.569	22	52	74	5.3	23	0	10	32	8	13	185	13.2
01	James, Jayon	21-20	649	30.9	76-156	.487	1-9	.111	52-89	.584	22	109	131	6.2	53	1	96	54	15	26	205	9.8
00	Williams, Marvin	19-16	450	23.7	65-141	.461	1-5	.200	22-41	.537	33	47	80	4.2	51	2	9	30	21	10	153	8.1
11	Coppola, Nick	21-21	670	31.9	41-112	.366	18-44	.409	25-38	.658	9	50	59	2.8	43	1	73	48	0	11	125	6.0
33	Grieves, Daniel	19-1	265	13.9	29-80	.363	23-66	.348	4-7	.571	7	21	28	1.5	33	0	7	8	1	5	85	4.5
04	McCray, RJ	17-1	263	15.5	22-61	.361	7-23	.304	15-21	.714	5	16	21	1.2	20	0	20	18	3	11	66	3.9
13	Amajoyi, Chinedu	16-9	221	13.8	16-43	.372	11-23	.478	19-25	.760	9	30	39	2.4	11	0	6	10	2	6	62	3.9
02	Harvey, DeMondre	21-4	302	14.4	28-51	.549	0-0	.000	8-19	.421	28	44	72	3.4	44	2	13	14	10	9	64	3.0
15	Koszuta, Kyle	18-0	189	10.5	14-46	.304	10-35	.286	2-6	.333	2	6	8	0.4	12	0	7	8	0	9	40	2.2
34	Carswell II, Leon	1-0	5	5.0	0-0	.000	0-0	.000	2-2	1.000	0	2	2	2.0	1	0	0	2	0	0	2	2.0
23	Brown, Millaun	13-0	139	10.7	8-18	.444	0-0	.000	4-13	.308	17	13	30	2.3	21	1	1	9	2	3	20	1.5
20	Sims, Evan	9-1	91	10.1	4-13	.308	0-1	.000	1-4	.250	3	6	9	1.0	17	1	2	6	2	1	9	1.0
35	Ponder, Colten	1-0	2	2.0	0-0	.000	0-0	.000	0-0	.000	0	0	0	0.0	0	0	0	0	0	0	0	0.0
Team											29	26	55				10					
Total.....		21	4300		496-1158	.428	111-344	.323	266-423	.629	224	506	730	34.8	383	10	273	285	80	132	1369	65.2
Opponents.....		21	4300		521-1186	.439	133-401	.332	292-431	.677	226	515	741	35.3	371	-	273	248	89	156	1467	69.9

TEAM STATISTICS	ULM	OPP
SCORING	1369	1467
Points per game	65.2	69.9
Scoring margin	-4.7	-
FIELD GOALS-ATT	496-1158	521-1186
Field goal pct	.428	.439
3 POINT FG-ATT	111-344	133-401
3-point FG pct	.323	.332
3-pt FG made per game	5.3	6.3
FREE THROWS-ATT	266-423	292-431
Free throw pct	.629	.677
F-Throws made per game	12.7	13.9
REBOUNDS	730	741
Rebounds per game	34.8	35.3
Rebounding margin	-0.5	-
ASSISTS	273	273
Assists per game	13.0	13.0
TURNOVERS	285	248
Turnovers per game	13.6	11.8
Turnover margin	-1.8	-
Assist/turnover ratio	1.0	1.1
STEALS	132	156
Steals per game	6.3	7.4
BLOCKS	80	89
Blocks per game	3.8	4.2
ATTENDANCE	15814	61910
Home games-Avg/Game	10-1581	11-5628
Neutral site-Avg/Game	-	0-0

Date	Opponent	Score	Att.
11/08/13	at Kansas	L 63-80	16300
11/18/13	SAMFORD	W 86-52	1503
11/21/13	at Northwestern State	Wot 84-80	1723
12/09/13	THOMAS	W 84-61	1001
12/14/13	at LSU	L 54-61	7623
12/18/13	at Ole Miss	L 62-75	5754
12/22/13	LOUISIANA TECH	L 61-83	4107
12/27/13	at Ohio State	L 31-71	18534
* 01/04/14	ULL	Wo2 103-98	1482
* 1/9/2014	at UT Arlington	Lot 79-83	1059
* 01/11/14	TEXAS STATE	L 36-61	1106
* 01/16/14	at Troy	W 75-64	2038
* 01/18/14	at South Alabama	W 64-58	2385
* 01/23/14	WKU	L 51-69	1528
* 01/25/14	GEORGIA STATE	L 58-66	1682
* 01/30/14	ARKANSAS STATE	W 72-65	1186
* 02-01-14	at ULL	L 50-66	4685
* 2/6/14	at Texas State	L 57-65	0
* 02/13/14	UT ARLINGTON	L 74-85	1161
* 02/15/14	UALR	W 65-49	1058
* 02/20/14	at Georgia State	L 60-75	1809

* - Conference game



SUN BELT
CONFERENCE

Score by Periods	1st	2nd	OT	OT2	Totals
ULM	636	686	29	18	1369
Opponents	693	732	29	13	1467



Warhawks Men's Basketball

University of Louisiana at Monroe



2013-14 ULM MEN'S BASKETBALL ULM Combined Team Statistics (as of Feb 20, 2014) Conference games

Conference Only

RECORD:	OVERALL	HOME	AWAY	NEUTRAL
ALL GAMES	5-8	3-4	2-4	0-0
CONFERENCE	5-8	3-4	2-4	0-0
NON-CONFERENCE	0-0	0-0	0-0	0-0

#	Player	gp-gs	min	avg	Total		3-Point		F-Throw		Rebounds				pf	dq	a	to	blk	stl	pts	avg
					fg-fga	fg%	3fg-fga	3fg%	ft-fa	ft%	off	def	tot	avg								
12	Ongwae, Tylor	13-13	474	36.5	91-210	.433	14-58	.241	57-75	.760	25	63	88	6.8	37	1	18	24	8	19	253	19.5
10	Olatayo, Amos	6-3	175	29.2	24-62	.387	9-34	.265	15-27	.556	8	22	30	5.0	7	0	4	14	6	5	72	12.0
01	James, Jayon	13-12	421	32.4	50-99	.505	1-7	.143	26-52	.500	10	68	78	6.0	33	1	67	36	12	16	127	9.8
11	Coppola, Nick	13-13	457	35.2	31-76	.408	16-34	.471	17-26	.654	6	32	38	2.9	32	1	40	26	0	8	95	7.3
00	Williams, Marvin	11-9	263	23.9	33-76	.434	0-3	.000	14-25	.560	20	26	46	4.2	27	0	5	13	16	6	80	7.3
13	Amajoyi, Chinedu	10-9	190	19.0	13-36	.361	11-21	.524	15-19	.789	6	26	32	3.2	10	0	6	7	2	5	52	5.2
33	Grieves, Daniel	11-1	158	14.4	17-47	.362	14-41	.341	4-6	.667	5	12	17	1.5	19	0	3	2	1	3	52	4.7
04	McCray, RJ	9-0	152	16.9	12-33	.364	5-18	.278	5-9	.556	2	6	8	0.9	15	0	8	10	2	4	34	3.8
02	Harvey, DeMondre	13-4	196	15.1	20-33	.606	0-0	.000	2-8	.250	17	18	35	2.7	30	2	8	6	8	2	42	3.2
15	Koszuta, Kyle	10-0	82	8.2	6-19	.316	6-16	.375	2-6	.333	1	3	4	0.4	5	0	4	3	0	3	20	2.0
23	Brown, Millaun	5-0	54	10.8	4-7	.571	0-0	.000	1-9	.111	9	3	12	2.4	5	0	1	2	1	1	9	1.8
20	Sims, Evan	5-1	53	10.6	4-5	.800	0-0	.000	0-0	.000	1	2	3	0.6	9	1	1	1	1	1	8	1.6
Team											17	16	33					5				
Total.....		13	2675		305-703	.434	76-232	.328	158-262	.603	127	297	424	32.6	229	6	165	149	57	73	844	64.9
Opponents.....		13	2675		320-724	.442	86-247	.348	178-258	.690	143	320	463	35.6	228	-	166	142	44	83	904	69.5

TEAM STATISTICS	ULM	OPP
SCORING	844	904
Points per game	64.9	69.5
Scoring margin	-4.6	-
FIELD GOALS-ATT	305-703	320-724
Field goal pct	.434	.442
3 POINT FG-ATT	76-232	86-247
3-point FG pct	.328	.348
3-pt FG made per game	5.8	6.6
FREE THROWS-ATT	158-262	178-258
Free throw pct	.603	.690
F-Throws made per game	12.2	13.7
REBOUNDS	424	463
Rebounds per game	32.6	35.6
Rebounding margin	-3.0	-
ASSISTS	165	166
Assists per game	12.7	12.8
TURNOVERS	149	142
Turnovers per game	11.5	10.9
Turnover margin	-0.5	-
Assist/turnover ratio	1.1	1.2
STEALS	73	83
Steals per game	5.6	6.4
BLOCKS	57	44
Blocks per game	4.4	3.4
ATTENDANCE	9203	11976
Home games-Avg/Game	7-1315	6-1996
Neutral site-Avg/Game	-	0-0

Score by Periods	1st	2nd	OT	OT2	Totals
ULM	376	431	19	18	844
Opponents	410	458	23	13	904

Date	Opponent	Score	Att.
* 01/04/14	ULL	Wo2 103-98	1482
* 1/9/2014	at UT Arlington	Lot 79-83	1059
* 01/11/14	TEXAS STATE	L 36-61	1106
* 01/16/14	at Troy	W 75-64	2038
* 01/18/14	at South Alabama	W 64-58	2385
* 01/23/14	WKU	L 51-69	1528
* 01/25/14	GEORGIA STATE	L 58-66	1682
* 01/30/14	ARKANSAS STATE	W 72-65	1186
* 02-01-14	at ULL	L 50-66	4685
* 2/6/14	at Texas State	L 57-65	0
* 02/13/14	UT ARLINGTON	L 74-85	1161
* 02/15/14	UALR	W 65-49	1058
* 02/20/14	at Georgia State	L 60-75	1809

* - Conference game

Number of ULM Double-Figure Scorers by Game

Five Double-Figure Scorers (1-0)
vs. UL-L
(Ongwae/Olatayo/James/Williams/McCray)

Four Double-Figure Scorers (6-0)
vs. Samford (Olatayo/James/Ongwae/Grieves)
at NSU (Olatayo/James/Williams/Ongwae)
vs. Thomas (Ongwae/Harvey/Williams/James)
at Troy (Ongwae/James/Coppola/Olatayo)
at USA (Ongwae/Olatayo/Coppola/Grieves)
vs. ASU (Ongwae/Williams/Coppola/Amajoyi)

Three Double-Figure Scorers (1-6)
at No. 5 Kansas (Williams/Olatayo/Coppola)
at LSU (Williams/Olatayo/Ongwae)

vs. LA Tech (Ongwae/James/Olatayo)
at UTA (Ongwae/Olatayo/James)
vs. GSU (Ongwae/James/Grieves)
vs. UALR (Ongwae/James/McCray)
at GSU (Coppola/Ongwae/Amajoyi)

Two Double-Figure Scorers (0-4)
at Ole Miss (Olatayo/Ongwae)
vs. WKU (Olatayo/Ongwae)
at Texas State (James/Ongwae)
vs. UTA (Ongwae/James/Coppola)

One Double-Figure Scorer (0-2)
vs. Texas State (Ongwae)
at UL-L (Ongwae)

Zero Double-Figure Scorers (0-1)
at No. 3 Ohio State



0 Marvin Williams

Junior | Center | 6-8 | 245
Memphis, Tenn. | NW Florida State College

	Season-High	Career-High
Pts	19, at KU (11/8/13)	19, at KU (11/8/13)
FG	8, two times	8, two times
3FG	1, vs. SAM (11/18/13)	1, vs. SAM (11/18/13)
FT	4, two times	4, two times
Ast	2, two times	2, two times
Reb	10, at NSU (11/21/13)	10, at NSU (11/21/13)
Blocks	4, vs. UALR (2/15/14)	4, vs. UALR (2/15/14)
Steals	1, nine times	1, nine times
Min	33, two times	33, two times

Opponent	Date	GS	Min	FG-FGA/Pct.	3FG-FGA	FT-FTA/PCT	O-D-T	PF-FO	A	TO	Blk	Stl	Pts/Avg
Kansas	11/8/13	*	24	8-13/.615	0-0	3-5/.600	2-4-6	5-1	0	2	0	0	19/19.0
Samford	11/18/13	*	21	2-6/.333	1-1	0-0/.000	0-3-3	3-0	1	1	1	0	5/12.0
NSU	11/21/13	*	33	6-12/.500	0-0	1-4/.250	2-8-10	5-1	1	1	1	0	13/12.3
Thomas	12/9/13	*	22	4-6/.667	0-0	4-6/.667	1-3-4	2-0	0	2	3	1	12/12.3
LSU	12/14/13	*	28	7-10/.700	0-0	0-1/.000	3-0-3	3-0	0	5	0	1	14/12.6
Ole Miss	12/18/13	*	25	1-8/.125	0-0	0-0/.000	2-0-2	3-0	2	3	0	1	2/10.8
La. Tech	12/22/13	*	24	3-7/.429	0-0	0-0/.000	2-2-4	0-0	0	3	0	1	6/10.1
OSU	12/27/13	*	10	1-3/.333	0-1	0-0/.000	1-1-2	3-0	0	0	0	0	2/9.1
ULL	1/4/14	*	29	6-14/.429	0-0	4-5/.800	4-1-5	4-0	1	0	2	1	16/9.9
UTA	1/9/14	*	31	3-5/.600	0-0	0-0/.000	3-5-8	3-0	2	3	1	1	8/9.5
TXST	1/11/14	*	18	0-5/.000	0-0	0-0/.000	2-1-3	2-0	0	1	0	0	0/8.6
Troy	1/16/14					DNP							
USA	1/18/14					DNP							
WKU	1/23/14		4	1-1/1.000	0-0	0-0/0.000	0-0-0	1-0	0	0	0	0	2/8.1
GSU	1/25/14	*	33	3-6/50.0	0-0	1-1/1.000	0-5-5	1-0	1	2	3	0	7/8.0
ASU	1/30/14	*	23	8-13/.615	0-0	0-0/0.000	3-3-6	3-0	0	0	2	1	16/8.6
ULL	2/1/14	*	24	3-9/33.3	0-1	2-3/.667	1-5-6	2-0	0	2	1	1	8/8.5
TXST	2/6/14	*	28	2-5/40.0	0-1	2-4/50.0	1-2-3	2-0	0	3	1	1	6/8.4
UTA	2/13/14	*	23	1-6/16.7	0-1	2-2/1.000	1-0-1	1-0	1	0	2	0	4/8.1
UALR	2/15/14	*	22	3-5/60.0	0-0	0-2/0.000	3-1-4	4-0	0	1	4	0	6/8.0
GSU	2/20/14	*	28	3-7/42.9	0-0	3-8/37.5	2-3-5	4-0	0	1	0	1	9/8.1
WKU													
USA													
Troy													
ASU													
UALR													
Totals		17	450	65-141/.461	1-5/.200	22-41/.537	33-47-80	51-2	9	30	21	13	153/8.1



2 DeMondre Harvey

Sophomore | Forward | 6-7 | 210
Minden, La. | Pearl River CC

	Season-High	Career-High
Pts	11, vs. Thom (12/9/13)	11, vs. Thom (12/9/13)
FG	4, vs. Thom (12/9/13)	4, vs. Thom (12/9/13)
3FG	N/A	N/A
FT	3, vs. Thom (12/9/13)	3, vs. Thom (12/9/13)
Ast	2, three times	2, three times
Reb	8, at Miss (12/18/13)	8, at Miss (12/18/13)
Blocks	2, two times	2, two times
Steals	2, vs. LA Tech (12/22/13)	2, vs. LA Tech (12/22/13)
Min	25, vs. WKU (1/23/14)	25, vs. WKU (1/23/14)

Opponent	Date	GS	Min	FG-FGA/Pct.	3FG-FGA	FT-FTA/PCT	O-D-T	PF-FO	A	TO	Blk	Stl	Pts/Avg
Kansas	11/8/13		9	0-0/0.000	0-0	0-0/0.000	0-2-2	2-0	0	1	0	1	0/0.0
Samford	11/18/13		13	1-2/.500	0-0	0-0/0.000	0-5-5	2-0	1	0	1	1	2/1.0
NSU	11/21/13		9	0-0/0.000	0-0	1-2/.500	1-4-5	2-0	1	1	0	0	1/1.0
Thomas	12/9/13		15	4-5/.800	0-0	3-5/.600	2-4-6	2-0	1	2	1	1	11/3.5
LSU	12/14/13		10	1-1/1.000	0-0	1-2/.500	0-2-2	0-0	0	0	0	1	3/3.4
Ole Miss	12/18/13		14	1-3/.333	0-0	0-0/0.000	3-5-8	3-0	0	1	0	1	2/3.2
La. Tech	12/22/13		17	0-1/0.000	0-0	1-2/.500	1-2-3	1-0	2	0	0	2	1/2.9
OSU	12/27/13		19	1-6/.167	0-0	0-0/0.000	4-2-6	2-0	0	1	0	0	2/2.8
ULL	1/4/14		9	1-2/.500	0-0	0-1/0.000	1-2-3	2-0	0	1	0	0	2/2.7
UTA	1/9/14		11	1-1/1.000	0-0	0-0/0.000	1-0-1	1-0	0	0	0	0	2/2.6
TX ST	1/11/14		18	2-5/.400	0-0	0-0/0.000	1-2-3	1-0	0	0	0	0	4/2.7
Troy	1/16/14	*	24	2-5/.400	0-0	0-0/0.000	1-1-2	4-0	2	0	2	0	4/2.8
USA	1/18/14	*	21	3-3/1.000	0-0	2-2/1.000	4-3-7	5-1	1	1	2	0	8/3.2
WKU	1/23/14	*	25	3-5/.600	0-0	0-4/0.000	1-2-3	1-0	0	1	1	1	6/3.4
GSU	1/25/14		9	0-0/0.000	0-0	0-0/0.000	0-0-0	2-0	0	1	1	0	0/3.2
ASU	1/30/14	*	3	1-1/1.000	0-0	0-0/0.000	0-0-0	2-0	0	0	0	0	2/3.1
ULL	2/1/14		7	0-2/0.000	0-0	0-0/0.000	1-1-2	2-0	2	0	0	0	0/2.9
TX ST	2/6/14		12	0-0/0.000	0-0	0-1/0.000	0-0-0	0-0	1	1	0	0	0/2.8
UTA	2/13/14		19	2-3/.667	0-0	0-0/0.000	3-4-7	5-1	0	0	1	0	4/2.8
UALR	2/15/14		15	2-2/1.000	0-0	0-0/0.000	1-0-1	3-0	0	1	1	0	4/2.9
GSU	2/20/14		23	3-4/.750	0-0	0-0/0.000	3-3-6	2-0	2	0	0	1	6/3.0
WKU													
USA													
Troy													
ASU													
UALR													
Totals		4	302	28-51/.549	0-0	8-19/.421	28-44-.72	44-2	13	14	10	9	64/3.0



1 Jayon James

Senior | Forward | 6-6 | 225
Paterson, N.J. | Lamar State-Port Arthur

	Season-High	Career-High
Pts	18, at TXST (2/6/14)	26, vs. FAU (12/29/13)
FG	8, at TXST (2/6/14)	12, vs. FAU (12/29/13)
3FG	1, vs. TXST (1/11/14)	3, at UALR (12/1/12)
FT	9, at NSU (11/21/13)	9, at NSU (11/21/13)
Ast	9, at UTA (1/9/14)	15, at FAU (2/2/13)
Reb	12, vs. ULL (1/4/14)	12, three times
Blocks	5, vs. UALR (2/15/14)	5, vs. UALR (2/15/14)
Steals	3, three times	6, vs. WKU (3/8/13)
Min	40, at TXST (2/6/14)	42, vs. Troy (1/26/13)

Opponent	Date	GS	Min	FG-FGA/Pct.	3FG-FGA	FT-FTA/PCT	O-D-T	PF-FO	A	TO	Blk	Stl	Pts/Avg	
Kansas	11/8/13	*	33	2-8/.250	0-0	1-3/.333	0-4-4	4-0	4	0	0	1	5/5.0	
Samford	11/18/13	*	26	6-8/.750	0-1	2-2/1.000	1-8-9	2-0	4	2	1	2	14/9.5	
NSU	11/21/13	*	37	4-7/.571	0-0	9-11/.818	1-6-7	2-0	6	5	0	2	17/12.0	
Thomas	12/9/13	*	25	4-6/.667	0-0	2-4/.500	1-5-6	2-0	2	5	1	0	10/11.5	
LSU	12/14/13	*	30	0-6/.000	0-0	2-2/1.000	2-5-7	2-0	3	0	1	1	2/9.6	
Ole Miss	12/18/13	*	26	4-11/.364	0-0	1-3/.333	5-6-11	4-0	5	1	0	3	9/9.5	
La. Tech	12/22/13	*	34	4-5/.800	0-0	6-9/.667	2-6-8	3-0	4	4	0	1	14/10.1	
OSU	12/27/13	*	17	2-6/.333	0-1	3-3/1.000	0-1-1	1-0	1	1	0	0	7/9.8	
ULL	1/4/14	*	38	6-7/.857	0-0	4-6/.667	2-10-12	5-1	5	3	0	2	16/10.4	
UTA	1/9/14	*	34	7-10/.700	0-0	0-3/.000	3-5-8	4-0	9	3	0	1	14/10.8	
TX ST	1/11/14	*	26	4-8/.500	1-2	0-6/.000	0-2-2	0-0	1	1	0	2	9/10.6	
Troy	1/16/14	*	37	6-8/.750	0-0	1-2/.500	0-4-4	3-0	5	2	0	1	13/10.8	
USA	1/18/14	*	17	0-2/.000	0-0	0-0/.000	0-4-4	3-0	5	0	0	0	0/10.0	
WKU	1/23/14	*	23	2-6/.333	0-1	5-6/.833	1-0-1	1-0	4	4	0	1	9/9.9	
GSU	1/25/14	*	38	5-8/.625	0-1	1-2/.500	2-5-7	3-0	5	5	2	0	11/10.0	
ASU	1/30/14	*	39	4-11/.364	0-1	1-4/.250	2-5-7	2-0	7	3	3	1	9/9.9	
ULL	2/1/14	*	28	0-5/.000	0-0	0-2/.000	0-4-4	1-0	5	1	2	0	0/9.4	
TX ST	2/6/14	*	40	8-14/.571	0-1	2-3/.667	0-6-6	4-0	5	3	0	3	18/9.8	
UTA	2/13/14	*	37	5-11/.455	0-1	5-8/.625	0-6-6	4-0	6	3	0	2	15/10.1	
UALR	2/15/14	*	37	3-6/.500	0-0	6-8/.750	0-11-11	2-0	8	4	5	3	12/10.2	
GSU	2/20/14	*	27	0-3/.000	0-0	1-2/.500	0-6-6	1-0	2	4	0	0	1/9.8	
WKU														
USA														
Troy														
ASU														
UALR														
Totals			20	649	76-156/.487	1-9	52-89/.584	22-109-120	53-1	96	52	15	24	205/9.8



3 Marcelis Hansberry

Senior | Guard | 6-0 | 185
Jackson, Miss. | Provine HS

	Season-High	Career-High
Pts	N/A	22, at UALR (2/4/12)
FG	N/A	7, at USA (1/17/13)
3FG	N/A	3, at UALR (2/4/12)
FT	N/A	5, at NT (2/16/12)
Ast	N/A	9, at USA (2/11/12)
Reb	N/A	9, at NT (2/16/12)
Blocks	N/A	1, two times
Steals	N/A	4, at USA (1/17/13)
Min	N/A	37, at FAU (1/31/13)

Opponent	Date	GS	Min	FG-FGA/Pct.	3FG-FGA	FT-FTA/PCT	O-D-T	PF-FO	A	TO	Blk	Stl	Pts/Avg
Kansas	11/8/13					DNP							
Samford	11/18/13					DNP							
NSU	11/21/13					DNP							
Thomas	12/9/13					DNP							
LSU	12/14/13					DNP							
Ole Miss	12/18/13					DNP							
La. Tech	12/22/13					DNP							
OSU	12/27/13					DNP							
ULL	1/4/14					DNP							
UTA	1/9/14					DNP							
TX ST	1/11/14					DNP							
Troy	1/16/14					DNP							
USA	1/18/14					DNP							
WKU	1/23/14					DNP							
GSU	1/25/14					DNP							
ASU	1/30/14					DNP							
ULL	2/1/14					DNP							
TX ST	2/6/14					DNP							
UTA	2/13/14					DNP							
UALR	2/15/14					DNP							
GSU	2/20/14					DNP							
WKU													
USA													
Troy													
ASU													
UALR													
<hr/>													
Totals						ACL Injury							



4 R.J. McCray

Senior | Guard | 6-2 | 190

Arlington, Texas | Grace Prep Academy

	Season-High	Career-High
Pts	12, vs. UALR (2/15/14)	17, at SLU (12/10/12)
FG	5, vs. UALR (2/15/14)	5, two times
3FG	2, two times	3, vs. Troy (1/26/13)
FT	5, vs. ULL (1/4/14)	6, vs. Southern (12/13/12)
Ast	5, at LSU (12/14/13)	7, vs. UALR (2/7/13)
Reb	5, at LSU (12/14/13)	5, at LSU (12/14/13)
Blocks	1, three times	2, at Tennessee (11/16/11)
Steals	2, three times	4, vs. WKU (12/29/11)
Min	24, at UTA (1/9/14)	42, at SLU (12/10/12)

Opponent	Date	GS	Min	FG-FGA/Pct.	3FG-FGA	FT-FTA/PCT	O-D-T	PF-FO	A	TO	Blk	Stl	Pts/Avg
Kansas	11/8/13	9	1-2/500	0-0	3-4/.750	0-0-0	1-0	0	0	0	0		5/5.0
Samford	11/18/13	14	1-4/250	0-2	3-3/1.000	0-1-1	0-0	2	0	0	2		5/5.0
NSU	11/21/13	11	1-3/333	0-1	1-2/500	0-0-0	0-0	0	1	0	0		3/4.3
Thomas	12/9/13	18	2-3/.667	0-0	0-0/0.000	0-1-1	0-0	4	2	0	1		4/4/3
LSU	12/14/13	11	0-1/0.000	0-0	2-2/1.000	2-3-5	2-0	5	1	0	2		2/3.8
Ole Miss	12/18/13	9	1-3/333	0-0	1-1/1.000	0-1-1	1-0	1	1	1	0		3/3.7
La. Tech	12/22/13	*	18	3-7/.429	1-1	0-0/0.000	0-2-2	1-0	0	2	0	1	7/4.1
OSU	12/27/13	21	1-5/.200	1-1	0-0/0.000	1-2-3	0-0	0	1	0	1		3/4.0
ULL	1/4/14	23	3-8/375	0-2	5-8/.625	0-0-0	0-0	1	0	0	1		11/4.8
UTA	1/9/14	24	1-5/.200	1-2	0-0/0.000	2-2-4	4-0	3	1	1	2		3/4.6
TX ST	1/11/14	13	0-2/0.000	0-2	0-0/0.000	0-0-0	3-0	0	1	0	0		0/4.2
Troy	1/16/14				DNP								
USA	1/18/14				DNP								
WKU	1/23/14				DNP								
GSU	1/25/14				DNP								
ASU	1/30/14	12	0-0/0.000	0-0	0-0/0.000	0-0-0	3-0	0	0	0	0		0/3.8
ULL	2/1/14	11	1-3/333	0-1	0-0/0.000	0-1-1	0-0	1	0	0	0		2/3.7
TX ST	2/6/14	17	0-1/0.000	0-1	0-0/0.000	0-1-1	2-0	1	1	0	0		0/3.4
UTA	2/13/14	17	2-5/400	2-4	0-0/0.000	0-0-0	3-0	0	2	0	0		6/3.6
UALR	2/15/14	22	5-6/.833	2-3	0-1/0.000	0-2-2	0-0	1	2	1	1		12/4.1
GSU	2/20/14	13	0-3/0.000	0-3	0-0/0.000	0-0-0	0-0	1	3	0	0		0/3.9
WKU													
USA													
Troy													
ASU													
UALR													
Totals		1	263	22-61/361	7-23/304	15-21/714	5-16-21	20-0	20	18	3	11	66/3.9



11 Nick Coppola

Freshman | Guard | 5-11 | 195

Richmond, Va. | Benedictine Prep

	Season-High	Career-High
Pts	16, at GSU (2/20/14)	16, at GSU (2/20/14)
FG	5, at GSU (2/20/14)	5, at GSU (2/20/14)
3FG	4, at GSU (2/20/14)	4, at GSU (2/20/14)
FT	5, at KU (11/8/13)	5, at KU (11/8/13)
Ast	8, at NSU (11/21/13)	8, at NSU (11/21/13)
Reb	6, vs. WKU (1/23/14)	6, vs. WKU (1/23/14)
Blocks	N/A	N/A
Steals	2, two times	2, two times
Min	40, seven times	40, seven times

Opponent	Date	GS	Min	FG-FGA/Pct.	3FG-FGA	FT-FTA/PCT	O-D-T	PF-FO	A	TO	Blk	Stl	Pts/Avg
Kansas	11/8/13	*	31	2-5/400	1-3	5-7/714	0-3-3	0-0	2	2	0	0	10/10.0
Samford	11/18/13	*	26	2-5/400	0-1	1-3/333	0-3-3	2-0	6	0	0	0	5/7.5
NSU	11/21/13	*	34	1-5/200	0-1	0-0/0.000	0-2-2	3-0	8	7	0	2	2/5.7
Thomas	12/9/13	*	22	2-3/667	1-1	2-2/1.000	0-3-3	0-0	3	5	0	0	7/6.0
LSU	12/14/13	*	29	0-3/000	0-1	0-0/0.000	0-2-2	2-0	4	2	0	0	0/4.8
Ole Miss	12/18/13	*	31	3-6/500	0-1	0-0/0.000	2-3-5	3-0	5	3	0	0	6/5.0
La. Tech	12/22/13	*	28	0-7/000	0-1	0-0/0.000	1-1-2	0-0	4	2	0	0	0/4.3
OSU	12/27/13	*	12	0-2/000	0-1	0-0/0.000	0-1-1	1-0	1	1	0	0	0/4.0
ULL	1/4/14	*	29	0-2/000	0-0	4-7/571	1-3-4	4-0	2	1	0	0	0/3.8
UTA	1/9/14	*	26	2-3/667	0-1	0-0/0.000	0-1-1	3-0	4	3	0	1	4/3.8
TX ST	1/11/14	*	27	1-4/250	1-1	0-2/000	1-2-3	0-0	2	1	0	2	3/3.7
Troy	1/16/14	*	40	3-7/429	2-2	2-2/1.000	1-2-3	1-0	3	2	0	1	10/4.3
USA	1/18/14	*	40	3-7/429	1-2	3-5/600	0-3-3	3-0	3	1	0	0	10/4.7
WKU	1/23/14	*	40	0-2/000	0-1	4-6/667	0-6-6	1-0	5	1	0	1	4/4.6
GSU	1/25/14	*	40	1-6/167	1-3	0-0/0.000	0-3-3	4-0	2	3	0	0	3/4.5
ASU	1/30/14	*	40	4-7/571	2-3	2-2/1.000	2-2-4	1-0	7	2	0	1	12/5.0
ULL	2/1/14	*	37	3-8/375	1-2	0-0/0.000	1-0-1	3-0	1	3	0	1	7/5.1
TX ST	2/6/14	*	40	4-7/571	1-3	0-0/0.000	0-0-0	5-1	2	2	0	1	9/5.3
UTA	2/13/14	*	40	4-8/500	3-7	0-0/0.000	0-2-2	2-0	3	4	0	1	11/5.6
UALR	2/15/14	*	24	1-4/250	0-2	0-0/0.000	0-3-3	3-0	1	1	0	0	2/5.5
GSU	2/20/14	*	34	5-11/455	4-7	2-2/1.000	0-5-5	2-0	5	2	0	0	16/6.0
WKU													
USA													
Troy													
ASU													
UALR													
Totals		21	670	41-112/366	18-44/409	25-38/658	9-50-59	43-1	73	48	0	11	125/6.0



10 Amos Olatayo

Senior | Guard | 6-4 | 200

Houston, Texas | Navarro College

	Season-High	Career-High
Pts	30, at NSU (11/21/13)	30, (previous) at FIU (2/2/13)
FG	11, at NSU (11/21/13)	12, at FIU (2/2/13)
3FG	4, at UTA (1/9/14)	4, at UTA (1/9/14)
FT	6, at NSU (11/21/13)	9, vs ULL (3/2/13)
Ast	3, vs. THOM (12/9/13)	4, vs. ULL (3/2/13)
Reb	9, at NSU (11/21/13)	11, at ASU (1/19/13)
Blocks	5, vs. ULL (1/4/14)	5, vs. ULL (1/4/14)
Steals	2, three times	4, vs. ULL (3/2/13)
Min	45, vs. ULL (1/4/14)	45, vs. ULL (1/4/14)

Opponent	Date	GS	Min	FG-FGA/Pct.	3FG-FGA	FT-FTA/PCT	O-D-T	PF-FO	A	TO	Blk	Stl	Pts/Avg
Kansas	11/8/13	*	33	5-10/.500	0-2	1-2/.500	1-2-3	3-0	2	4	0	1	11/11.0
Samford	11/18/13	*	25	10-13/.769	2-4	0-0/.000	2-2-4	1-0	0	2	1	1	22/16.5
NSU	11/21/13	*	37	11-13/.846	2-2	6-10/.600	2-7-9	4-0	0	6	0	2	30/21.0
Thomas	12/9/13	*	29	2-6/.333	1-4	2-2/1.000	1-4-5	1-0	3	1	0	0	7/17.5
LSU	12/14/13	*	28	4-13/.308	0-4	3-4/.750	1-7-8	2-0	0	1	1	1	11/16.2
Ole Miss	12/18/13	*	26	7-16/.438	2-5	1-4/.250	4-2-6	0-0	1	2	0	1	17/16.3
La. Tech	12/22/13	*	28	4-13/.308	3-6	0-0/.000	3-4-7	4-0	0	2	0	2	11/15.6
OSU	12/27/13	*	17	1-4/.250	1-2	1-2/.500	0-2-2	1-0	0	0	0	0	4/14.1
ULL	1/4/14	*	45	6-18/.333	2-9	2-4/.500	3-3-6	1-0	2	4	5	1	16/14.3
UTA	1/9/14	*	34	7-14/.500	4-9	2-2/1.000	1-7-8	1-0	0	2	0	1	20/14.9
TX ST	1/11/14	*	25	1-10/.100	0-6	2-3/.667	2-3-5	1-0	0	4	0	0	4/13.9
Troy	1/16/14		26	2-4/.500	2-3	4-6/.667	0-4-4	0-0	2	1	0	0	10/13.6
USA	1/18/14		23	4-7/.571	0-3	4-9/.444	0-4-4	2-0	0	2	0	2	12/13.5
WKU	1/23/14		22	4-9/.444	1-4	1-3/.333	2-1-3	2-0	0	1	1	1	10/13.2
GSU	1/25/14					DNP							
ASU	1/30/14					DNP							
ULL	2/1/14					DNP							
TX ST	2/6/14					DNP							
UTA	2/13/14					DNP							
UALR	2/15/14					DNP							
GSU	2/20/14					DNP							
WKU													
USA													
Troy													
ASU													
UALR													
Totals		11	392	68-150/.453	20-63/.317	29-51/.569	22-53-74	23-0	10	32	8	13	185/13.2



12 Tylor Ongwae

Junior | Forward | 6-7 | 205

Eldoret, Kenya | Ranger College

	Season-High	Career-High
Pts	27, two times	27, two times
FG	11, vs. ULL (1/4/14)	11, vs. ULL (1/4/14)
3FG	4, at UTA (1/9/14)	4, at UTA (1/9/14)
FT	9, two times	9, two times
Ast	4, vs. Thom (12/9/13)	4, vs. Thom (12/9/13)
Reb	11, two times	11, two times
Blocks	3, vs. ULL (1/4/14)	3, vs. ULL (1/4/14)
Steals	5, vs. UALR (2/15/14)	5, vs. UALR (2/15/14)
Min	46, vs. ULL (1/4/14)	46, vs. ULL (1/4/14)

Opponent	Date	GS	Min	FG-FGA/Pct.	3FG-FGA	FT-FTA/PCT	O-D-T	PF-FO	A	TO	Blk	Stl	Pts/Avg
Kansas	11/8/13	* 15	1-4/.250	0-2	2-2/1.000	1-1-2	5-1	3	1	0	1		4/4.0
Samford	11/18/13	* 25	5-11/.455	0-1	4-5/.800	3-2-5	0-0	3	1	1	2		14/9.0
NSU	11/21/13	* 29	3-6/.500	1-1	4-6/.667	0-5-5	4-0	1	5	2	0		11/9.7
Thomas	12/9/13	* 28	6-11/.545	1-3	9-10/.900	3-4-7	0-0	4	0	1	4		22/12.8
LSU	12/14/13	* 26	4-10/.400	0-0	4-4/1.000	1-2-3	2-0	0	1	0	2		12/12.6
Ole Miss	12/18/13	* 21	4-9/.444	2-4	2-2/1.000	0-2-2	2-0	0	2	2	0		12/12.5
La. Tech	12/22/13	* 35	9-19/.474	1-4	1-3/.333	2-3-5	3-0	0	2	2	0		20/13.6
OSU	12/27/13	* 13	2-7/.286	1-2	0-0/.000	3-2-5	1-0	0	0	0	0		5/12.5
ULL	1/4/14	* 46	11-21/.524	1-7	4-4/1.000	4-7-11	4-0	2	3	3	1		27/14.1
UTA	1/9/14	* 39	10-22/.455	4-8	1-3/.333	0-5-5	2-0	1	1	2	1		25/15.2
TX ST	1/11/14	* 29	5-11/.455	2-5	0-0/.000	1-2-3	1-0	1	1	0	0		12/14.9
Troy	1/16/14	* 25	7-15/.467	1-2	7-7/1.000	3-2-5	5-1	0	2	0	0		22/15.5
USA	1/18/14	* 40	6-20/.300	1-3	6-7/.857	1-3-4	0-0	2	2	0	3		19/15.8
WKU	1/23/14	* 38	4-12/.333	0-3	3-4/.750	2-4-6	4-0	1	1	0	0		11/15.4
GSU	1/25/14	* 38	10-16/.625	1-7	6-7/.857	2-8-10	4-0	3	3	0	1		27/16.2
ASU	1/30/14	* 40	6-16/.375	0-2	5-7/.714	2-7-9	4-0	1	0	1	2		17/16.3
ULL	2/1/14	* 36	6-16/.375	0-2	4-4/1.000	4-7-11	1-0	1	2	0	1		16/16.2
TX ST	2/6/14	* 39	6-14/.429	0-3	2-6/.333	2-5-7	3-0	3	2	1	2		14/16.1
UTA	2/13/14	* 37	7-15/.467	1-6	9-11/.818	1-4-5	4-0	0	2	0	2		24/16.5
UALR	2/15/14	* 35	8-17/.471	2-5	7-11/.636	0-5-5	4-0	2	4	1	5		25/17.0
GSU	2/20/14	* 32	5-14/.357	1-4	3-4/.750	3-4-7	1-0	1	1	0	1		14/16.8
WKU													
USA													
Troy													
ASU													
UALR													
Totals		21	662	125-287/.436	20-75/.267	83-107/.776	38-84-122	54-2	29	36	16	28	353/16.8



	Season-High	Career-High
Pts	11, at GSU (2/20/14)	11, at GSU (2/20/14)
FG	3, two times	3, two times
3FG	3, two times	3, two times
FT	10, vs. ASU (1/30/14)	10, vs. ASU (1/30/14)
Ast	2, two times	2, two times
Reb	7, vs. UALR (2/15/14)	7, vs. UALR (2/15/14)
Blocks	1, two times	1, two times
Steals	2, two times	2, two times
Min	29, two times	29, two times

A portrait of a young Black man with a beard and short hair, smiling broadly. He is wearing a maroon sleeveless basketball jersey with the Adidas logo on the right chest and the ULM logo (University of Louisiana at Monroe) featuring a hawk head and the text 'ULM' and 'UNIVERSITY OF LOUISIANA AT MONROE' on the front. The background is dark and out of focus.

20 Evan Sims

	Season-High	Career-High
Pts	2, four times	2, four times
FG	1, four times	1, four times
3FG	N/A	N/A
FT	1, at KU (11/8/13)	1, at KU (11/8/13)
Ast	1, two times	1, two times
Reb	3, at KU (11/8/13)	3, at KU (11/8/13)
Blocks	1, two times	1, two times
Steals	1, at Troy (1/16/14)	1, at Troy (1/16/14)
Min	18, at USA (1/18/14)	18, at USA (1/18/14)

Totals	1	91	4-13/.308	0-1	1-4/.250	3-6-9	15-1	2	6	2	1	9/1.0
---------------	---	----	-----------	-----	----------	-------	------	---	---	---	---	-------



	Season-High	Career-High
Pts	9, at ULL (2/1/14)	15, vs. WKU (3/8/13)
FG	3, two times	5, vs. WKU (3/8/13)
3FG	3, at ULL (2/1/14)	4, vs. WKU (3/8/13)
FT	2, vs. TXST (1/11/14)	4, vs. ASU (2/16/13)
Ast	2, vs TXST (1/11/14)	6, vs. FAU (12/29/12)
Reb	2, at Miss (12/18/13)	3, vs. WKU (3/8/13)
Blocks	N/A	N/A
Steals	2, two times	4, vs. FAU (12/29/12)
Min	21, two times	36, vs. WKU (3/8/13)

A portrait of a young man with dark hair and a light beard, smiling. He is wearing a maroon basketball jersey with the ULM logo and an Adidas logo. The background is dark and out of focus.

22 Lance Richard

	Season-High	Career-High
Pts	N/A	N/A
FG	N/A	N/A
3FG	N/A	N/A
FT	N/A	N/A
Asst	N/A	N/A
Reb	N/A	N/A
Blocks	N/A	N/A
Steals	N/A	N/A
Min	N/A	N/A

Totals	Redshirting
Number of students	60
Number of teachers	7
Number of parents	8
Number of administrators	1
Number of support staff	1
Number of community members	1
Number of other stakeholders	1
Total number of participants	79



	Season-High	Career-High
Pts	5, vs. ULL (1/4/14)	21, vs. NT (2/14/13)
FG	2, vs. ULL (1/4/14)	9, vs. NT (2/14/13)
3FG	N/A	N/A
FT	2, at KU (11/8/13)	3, at NT (2/14/13)
Ast	1, vs. TXST (1/11/14)	4, vs. WKU (3/8/13)
Reb	8, vs. ULL (1/4/14)	12, vs. WKU (2/21/13)
Blocks	1, two times	2, at FIU (2/2/13)
Steals	1, three times	3, vs. LTU (11/24/12)
Min	18, two times	36, at ASU (1/19/13)



	Season-High	Career-High
Pts	2, at OSU (12/27/13)	2, at OSU (12/27/13)
FG	N/A	N/A
3FG	N/A	N/A
FT	2, at OSU (12/27/13)	2, at OSU (12/27/13)
Ast	N/A	N/A
Reb	2, at OSU (12/27/13)	2, at OSU (12/27/13)
Blocks	N/A	N/A
Steals	N/A	N/A
Min	5, at OSU (12/27/13)	5, at OSU (12/27/13)



	Season-High	Career-High
Pts	13, vs. SAM (11/18/13)	13, vs. SAM (11/18/13)
FG	5, vs. SAM (11/18/13)	5, vs. SAM (11/18/13)
3FG	3, two times	3, two times
FT	2, at USA (1/18/14)	2, at USA (1/18/14)
Ast	1, seven times	1, seven times
Reb	4, at USA (1/18/14)	4, at USA (1/18/14)
Blocks	N/A	N/A
Steals	1, five times	1, five times
Min	35, vs. GSU (1/25/14)	35, vs. GSU (1/25/14)



	Season-High	Career-High
Pts	N/A	N/A
FG	N/A	N/A
3FG	N/A	N/A
FT	N/A	N/A
Asst	N/A	N/A
Reb	N/A	1, vs. LTU (11/24/12)
Blocks	N/A	N/A
Steals	N/A	N/A
Min	2, at OSU (12/27/13)	2, at OSU (12/27/13)



Warhawks Men's Basketball

University of Louisiana at Monroe



Media Roster



0 Marvin Williams

Junior | Center | 6-8 | 245
Memphis, Tenn.
NW Florida State College
8.1 ppg, 4.2 rpg, .450 FG%



13 Chinedu Amajoyi

Junior | Guard | 6-3 | 195
Rancho Cucamonga, Calif.
Kilgore College
3.9 ppg, .372 FG%, .478 3FG%



1 Jayon James

Senior | Forward | 6-6 | 225
Paterson, N.J.
Lamar State-Port Arthur
9.8 ppg, 6.2 rpg, 4.6 apg



15 Kyle Koszuta

Sophomore | Guard | 6-2 | 190
Niceville, Fla.
Niceville HS
2.2 ppg, .304 FG%, .286 3FG%



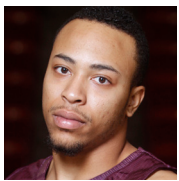
2 DeMondre Harvey

Sophomore | Forward | 6-7 | 210
Minden, La.
Pearl River CC
3.0 ppg, 3.4 rpg, .549 FG%



20 Evan Sims

Junior | Forward | 6-8 | 235
Houston, Texas
Lamar State-Port Arthur
1.0 ppg, 1.0 rpg, .308 FG%



3 Marcellis Hansberry

Senior | Guard | 6-0 | 185
Jackson, Miss.
Provine HS
ACL Injury



22 Lance Richard

Freshman | Guard | 5-10 | 170
Monroe, La.
Sterlington HS
Redshirting



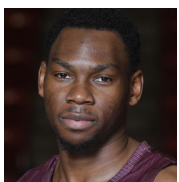
4 R.J. McCray

Senior | Guard | 6-2 | 190
Arlington, Texas
Grace Prep Academy
3.9 ppg, .361 FG%, .304 3FG%



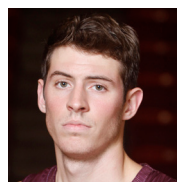
23 Millann Brown

Senior | Forward | 6-7 | 230
Gunnison, Miss.
East Mississippi CC
1.5 ppg, 2.4 rpg, .444 FG%



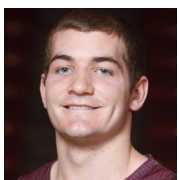
10 Amos Olatayo

Senior | Guard | 6-4 | 200
Houston, Texas
Navarro College
13.2 ppg, 5.3 rpg, .453 FG%



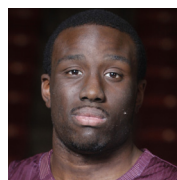
33 Daniel Grieves

Sophomore | Guard | 6-6 | 210
Bay St. Louis, Miss.
Pearl River CC
4.5 ppg, .363 FG%, .348 3FG%



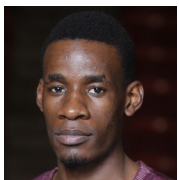
11 Nick Coppola

Freshman | Guard | 5-11 | 195
Richmond, Va.
Benedictine Prep
6.0 ppg, 3.5 apg, .409 3FG%



34 Leon Carswell JJ

Junior | Forward | 6-3 | 225
Bossier City, La.
Hannibal-LaGrange University
2.0 ppg, 2.0 rpg, (one appearance)



12 Tylor Ongwae

Junior | Forward | 6-7 | 205
Eldoret, Kenya
Ranger College
16.8 ppg, 5.8 rpg, .436 FG%



35 Colten Ponder

Sophomore | Forward | 6-5 | 215
Shreveport, La.
Calvary Baptist Academy
2 mins (one appearance)